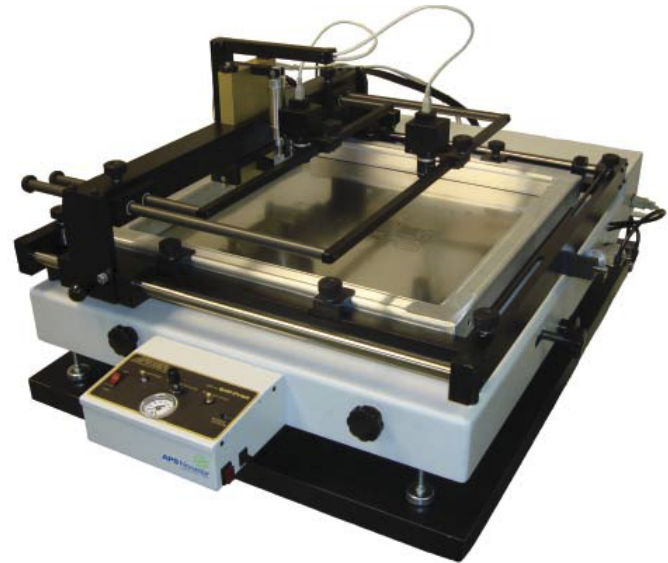


# SPR-45VA SMTRUE™ VISION ASSIST STENCIL PRINTER

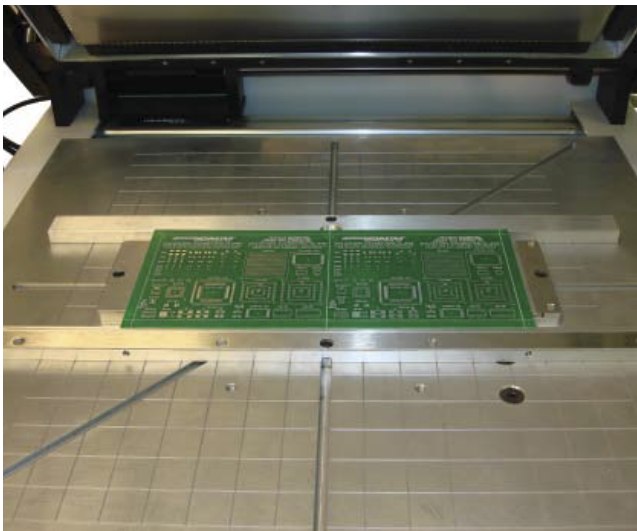
Your Economical Solution for:

- Prototyping
- Short to Medium Run, High Mix
- Production Environments
- Printing for Ultra-fine QFPs, MicroBGAs, and CSPs



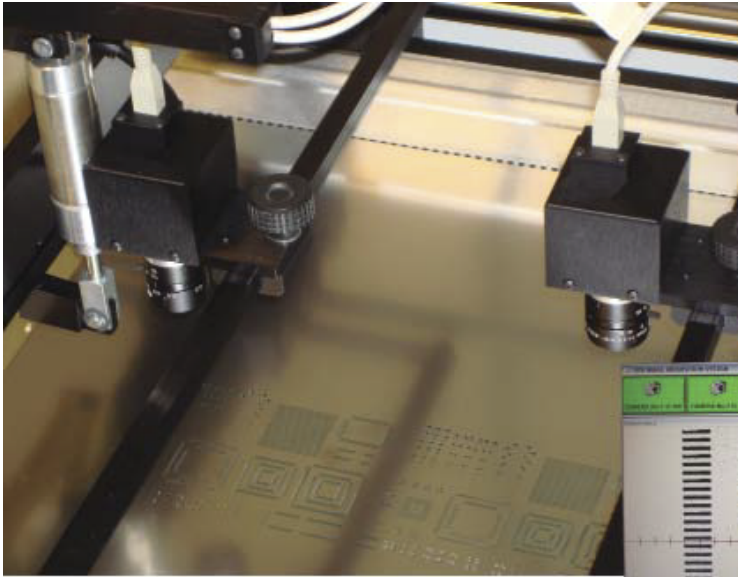
- High Magnification - 10X SMTrue Vision Assist for precise alignment of components down to 12 mil pitch
- Accurate stencil to board alignment the first time...every time
- Ultra fast, convenient, single and double-sided PCB loading and unloading
- Repeatable fine X, Y, Z, and Theta positional adjustments

## Features

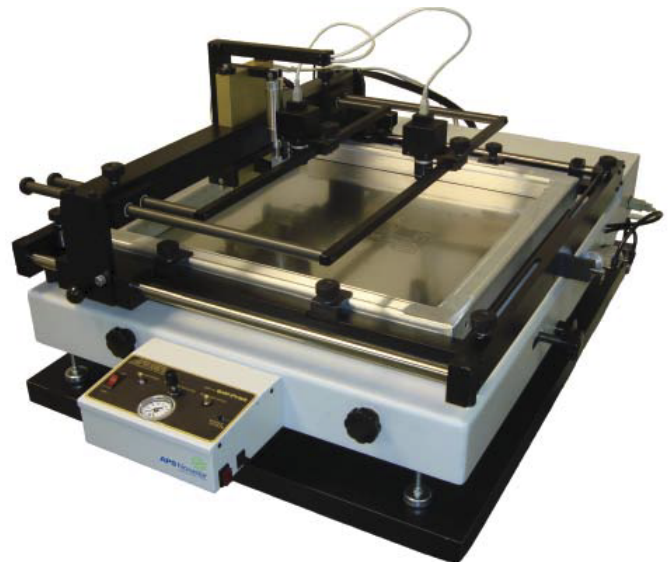
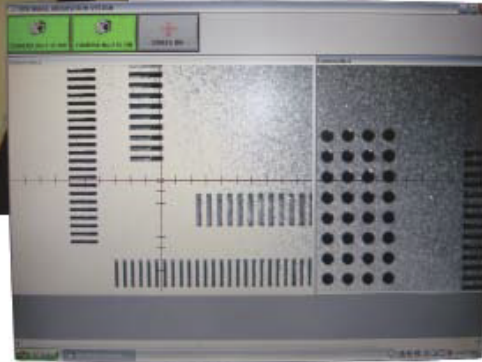


- SMTrue Vision Assist 10X magnification, axial alignment of stencil to board down to 12 mil ultra fine pitch, single or dual camera, software, communication cabling, and computer
- Pneumatic adjustable power sweep squeegee for printing with single or dual stroke
- Power frame lift for higher volume production
- Fine X, Y, and Theta adjustments for exact, repeatable stencil to board print alignment
- Single Z-axis self leveling adjustment

- Quick change spring loaded double sided PCB nesting kit
- PCB vacuum hold down (optional) Adjustable frame holder compatible with all tubular or cast 23" x 23" framed stencils
- Adjustable, reproducible angle-of-attack squeegee adjustments
- Dual squeegee holder (urethane or metal) with independent print force adjustment for clean,



Dual cameras provide axial vision alignment of the PCB board to the stencil for precise delivery of solder paste.



## Product Specifications

Printing Resolution	Down to 12 mil pitch components
Dual Squeegee	Yes
Urethane or Metal Squeegee	Machine supplied with 2 of each type squeegee
Single or double pass	Yes
Linear squeegee guide	Automatic
Adjustable angle of attack	Yes
Adjustable squeegee pressure	Pneumatic
Adjustable squeegee speed	Pneumatic
Maximum print area	16" x 18" (406mm x 457mm)
Compatible stencil frame size	Up to 23" x 23" (584mm x 584mm)
Foil Frame compatibility	Yes
Automatic power frame lift	Yes
X & Y adjustment	± 0.5000" (12.7mm)
Z axis adjustment	0 to 5/8" (16mm) single knob, self-leveling
Theta adjustment	Single knob to ± 5 degrees
Clear Lexan® fixture for initial registration	Yes (X, Y, and Theta)
Nesting kits for single and double sided PCBs	Quick exchange, spring loaded
Vacuum hold down option	Yes
Outside frame dimensions	23" x 23" (584mm x 584mm)
Air Pressure	80 psi (5 bar)
System Dimensions (H x W x D)	16" x 30" x 35" (406mm x 762mm x 889mm)
Height with stand option	47" (1194mm)
Approximate Weight	160 lbs (68kg)
Power	120 VAC, 50/60Hz, 2Amp (220-240 VAC available)