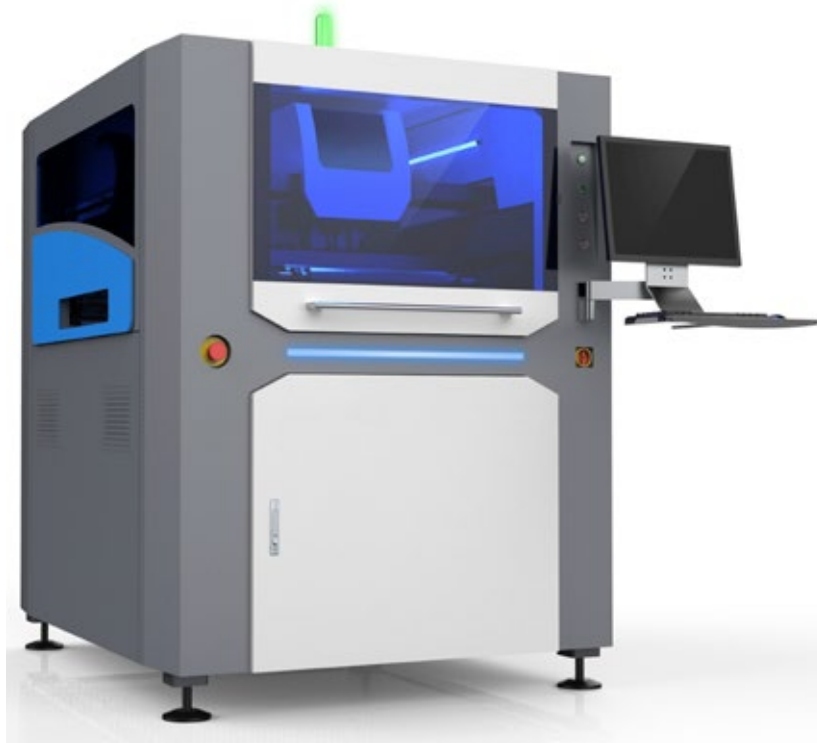


H610 AUTOMATIC STENCIL PRINTER



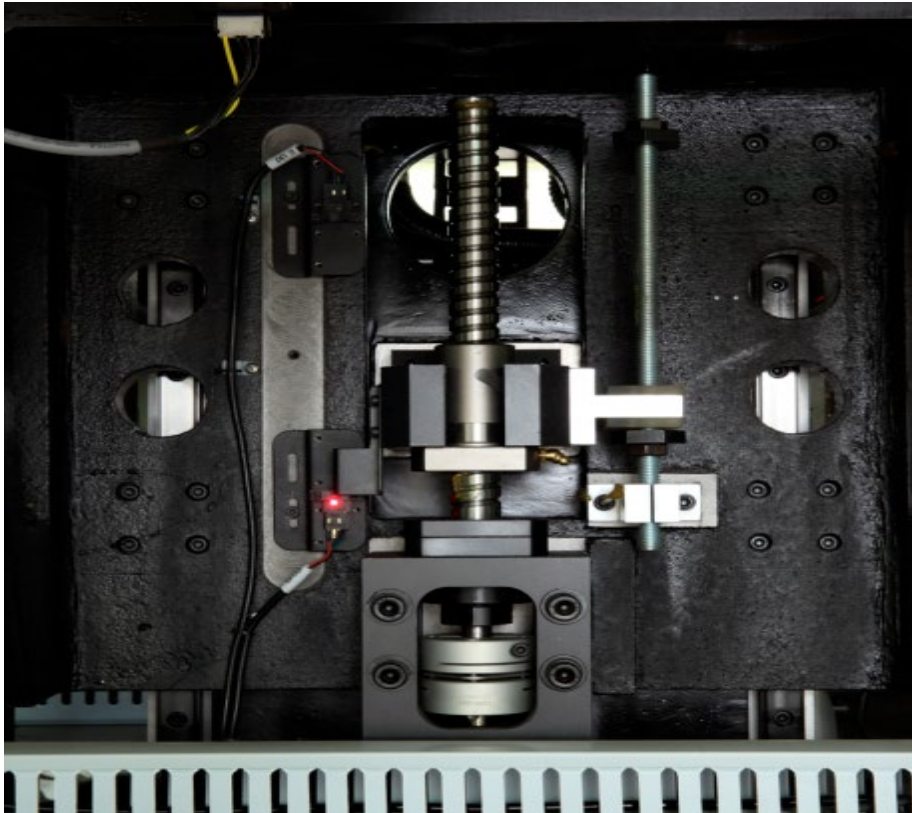
Description:

H610 with automatic recognition function of machine vision, using high-precision Servo drive system to achieve fast and accuracy alignment .The precision can reach +/- 0.01mm.It build in independent cleaning system, the cycle time less than 7s,ensure the high printing quality of solder paste and ultimate product efficiency. It also can print 0.3mm ultra fine pitch pad perfectly .This machine controlled by computer ,with Windows XP user interface and abundant software functions, it can set printing height, squeegee pressure, printing stroke, speed, and stencil automatic cleaning cycle etc. by software .It designed to keep the stability of printing quality, and greatly facilitate to users.

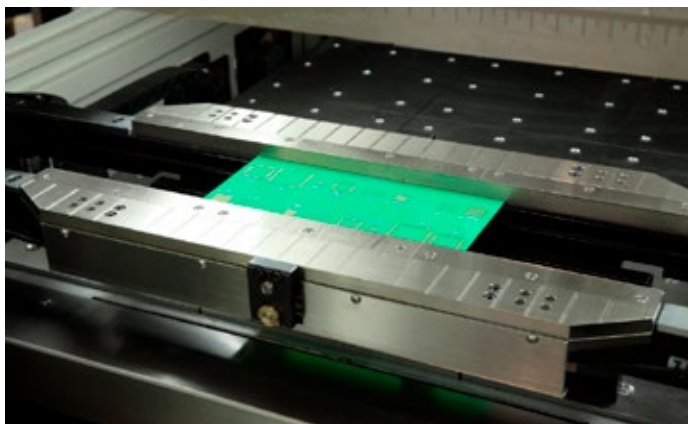
Features:

- Programmable squeegee system
- Stencil automatic position system
- Independent cleaning system
- PCB transfer and position system
- Easy-to-use interface humanized English/Chinese
- Image capture system
- 2D inspection & SPC
- CCD stencil alignment
- Automatic PCB thickness adjustment
- 3 stage conveyer(option)

Details:



Z-axis servo movements Direct
Z axis servo screw device to ensure accuracy, speed and snap off stability

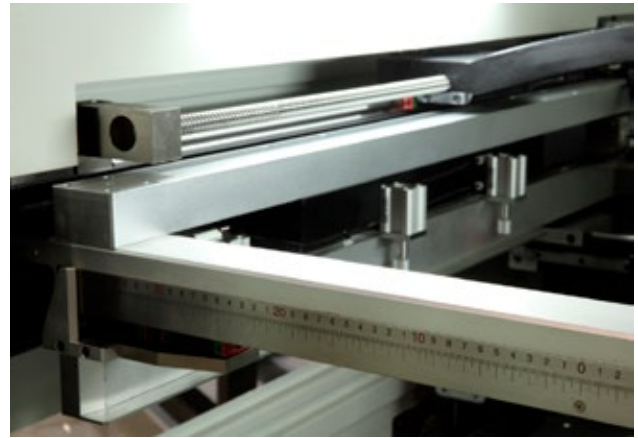
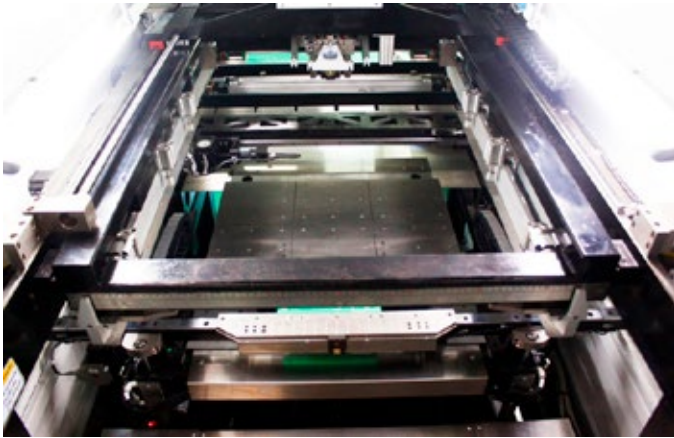


HTGD dedicated PCB thickness adaptive system
Structure is simple and reliable, adaptive PCB thickness. Smart quickly achieve different thickness matching the PCB and its transmission and clamping mechanism.



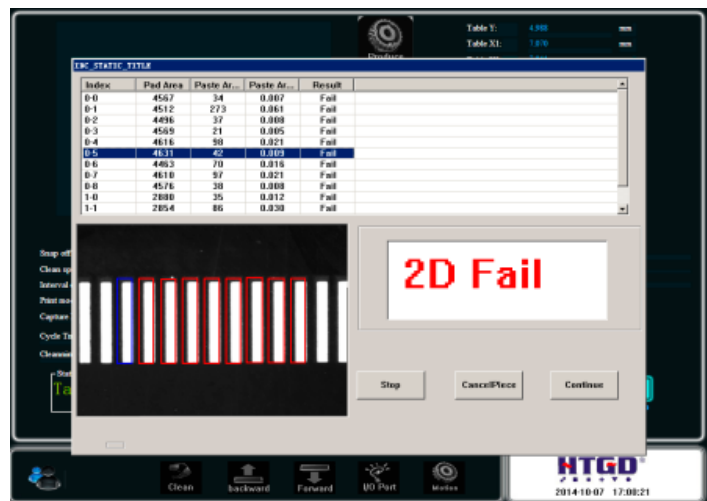
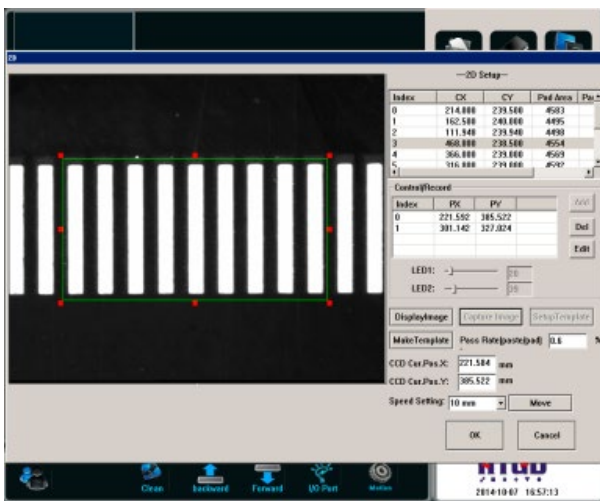
Servo-driven, closed-loop control blade system
Squeegee Y-axis servo screw drive with higher precision and more stable operation, extend the life; built-in precise pressure control system, providing customers with a good print control platform.

CCD stencil alignment system

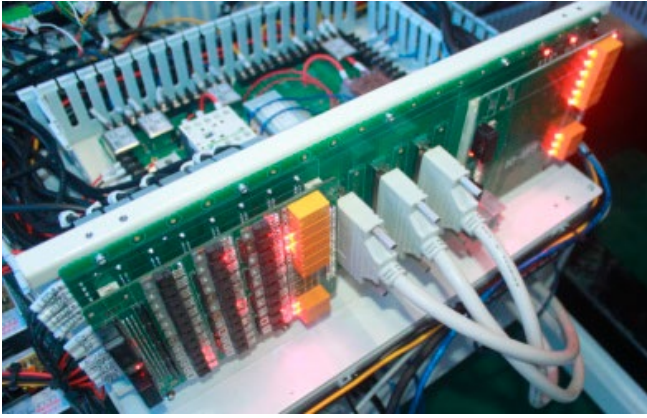


H610 use frame and stencil to do alignment, Z axis only control up and down, easy to ensure the printing accuracy, meanwhile, this function can minimize the cycle time ,and increase production efficiency frame correction, linear motor drive, more stable than the "correction system platform," make the machine more in line with the requirements of printing more accurate. Simply enter the stencil MARK point, can be achieved without an adapter in the production process of quick-change models; Y to automatic positioning

Inspection Software: 2D inspection



2D inspection system immediately detects solder paste deposition defects, such as deviation, lack solder paste, miss solder paste, misalignment , solder bridge, etc to ensure print quality



- All electrical parts with labels, customer can find out the problem depends on error message of PC and electrical drawing soon. H450 can detect the fault by red indicating light from I/O cards, bright is normal condition, dark is abnormal.
- Integrated circuit and upgraded movement control card to make operation and maintenance more convenient H450 can modify printing parameter during production process.

Specifications:

| H610 SPECIFICATIONS | |
|--------------------------|--|
| Maximum PCB Size (X x Y) | 610mm x 610mm |
| Minimum PCB Size (X x Y) | 80mm x 80mm |
| PCB Thickness | 0.4mm~14mm |
| PCB Warpage | Max. PCB Diagonal 1% |
| Maximum PCB Weight | 6Kg |
| Plate Edge Clearance | Up to 2.5mm |
| Maximum Bottom Clearance | 25mm |
| Transport Speed | 1500mm/Second(Max) |
| Transport Height | 900±40mm |
| Transport Direction | Left-Right, Right-Left, Left-Left, Right-Right |
| Transmission Mode | One Stage (three stages: option) |
| Clamping System | Patented over the top clamping /side clamping/vacuum nozzle(option) |
| Support System | Magnetic Pin/Support Blocks/Special tooling |
| Print Head | Two independent motorized print heads Gas-electric driving head (Option) Closed-loop print head (Option) |
| Frame Size | 550mm x 650mm~800 mm x 864 mm |
| Squeegee Type | Steel/Rubber Squeegee Blade(Angle:45/55/60) |

| H610 SPECIFICATIONS | |
|--------------------------|--|
| Squeegee length | 220mm~650mm |
| Squeegee height | 65±1mm |
| Squeegee thickness | 0.25mm Diamond-like carbon |
| Print Mode | Single or Double Squeegee Printing |
| Stencil Snap-off | 0.02 mm - 12 mm |
| Print Speed | 6 mm/sec - 200 mm/sec |
| Print Pressure | 0.5kg - 10Kg |
| Print Route | ±320 mm(from central) |
| Imaging Horizon (FOV) | 10.24mm x 6.4mm |
| Adjustment Range | X,Y:±10.0mm,θ:±2.0°. |
| Vision System | Look Up/Down Optics Structure/CCD/Geometry Pattern-match |
| Repeat Position Accuracy | ±0.01mm |
| Printing Accuracy | ±0.025mm |
| Cycle Time | ≤7s |
| Changeover Time | ≤5mins |
| Power Supply | AC220V±10%,50/60HZ,15A |
| Air Supply | 4~6Kg/cm ² , 10.0 Diameter of Tube |
| Operating System | Windows XP |
| Machine Dimensions | 1220mm x 1660mm x 1435mm |
| Machine Weight | 1230Kg |

Includes:

1. Automatic vision alignment
2. 2D inspection system
3. PCB support—side clamp, vacuum hold-down tooling, magnetic support pins
4. Dual squeegee assembly with single & dual stroke control
5. Pair of metal squeegees included
6. SMEMA Interface
7. Wet/dry/vacuum under stencil wiping system
8. Industrial PC with LCD monitor and Windows operating system
9. MC control software
10. One year parts warranty
11. Clean Paper for testing
12. Tooling Box
13. Solder paste mixing knife

Package & shipping:

