



LEAD FREE REFLOW OVEN WITH TEMPERATURE TESTING T200C+

Description

Lead free reflow oven T200C+= Reflow oven T200C + temperature curve tester.

T200C+ is not only with lead free welding function, but also with temperature measurement function.

Standout

1. 1.5mm cold-roll steel sheet, impact molding formed for one time
2. Unique hot air cycling system in furnace
3. Heating system technology
4. T200N uses the 6th generation of multi-channel high precision temperature control system
5. LED displayer temp control interface, digital measuring scale shows power output
6. America Omega sensor as temperature testing system, which is the only one in China
7. Smoke filtration system
8. Appearance, color
9. 2 suits of independent protection device on electric control system
10. The oven comes standard with a software to control the temperature by steps
11. Intelligent software system of desktop reflow oven
12. Software can satisfy multi operation system and multi language environment of chinese and english
13. Remote control function
14. Realize RS485 communication and USD interface
15. High temperature protection function
16. Configure cool-down system on oven
17. 4 layers of industrial package case
18. Stainless steel switch on operation panel
19. The first Desktop Nitrogen reflow oven in SMT industry, selling well for 6 years

New Additional function: with glass observer

Lead free reflow oven T200C+= Reflow oven T200C + temperature curve tester

T200C+ is not only with lead free welding function, but also with temperature measurement function.

Adjusting temperature curve constantly in order to get better welding in SMT field. Adjusted temperature is very important which is testing temperature by temperature tester. Temperature tester is used to measure temperature, process improvement and data analysis. In addition it can save data. This machine can meet requirements of ISO9001 system greater.



High reliability; measure actual temperature in real time for pad; draw temperature chart randomly; the format of temperature report is nice; high cost performance.

T200C+ introduce

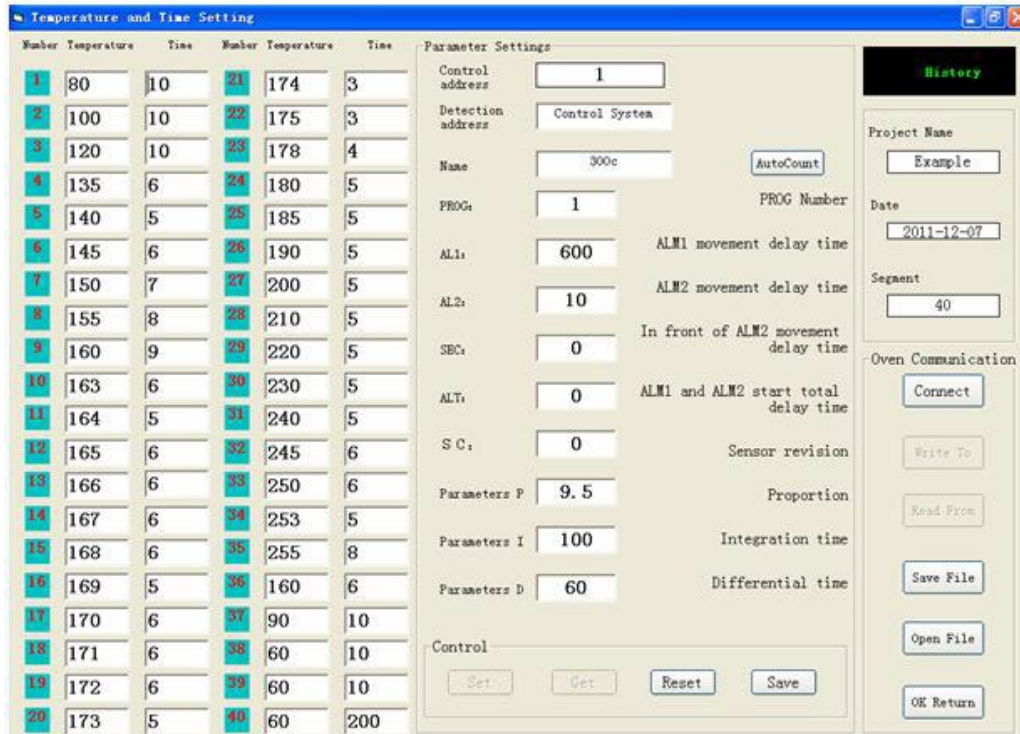


As an epoch-making product, T200C break instrument controlling market in 2005. In last 4 years, T200C entered General Electric (U.S.), Sony (Japan), the NVIDIA (United States), Chinese Academy of Sciences of the semiconductor, aerospace electronics, BYD and other well-known enterprises and laboratories.

T200C+ is suitable to small batch products, it is the good choice for electronics enterprises and research institutes, at the same time it is the complementary equipment for large and medium-sized production line.

T200C+ unique features

1. With all advantage of T200C
2. With better airproof function, the temperature is more uniformity.
3. With emitting smoke function.
4. With purifying and filtering exhaust gas function.
5. With single channel temperature measurement (multi channels is optical), T200C+ has been the first-class reflow oven.



▲ High precision, multi function ;

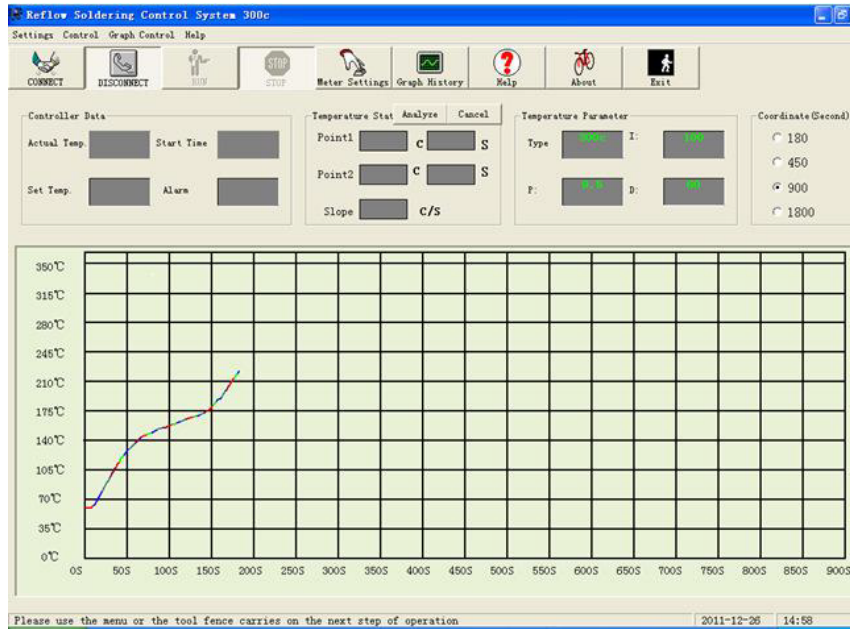
40 segment temperature curves can be set. It satisfies the welding of different components.

▲ Computer control

T200C+ breaks through the shortages such as the difficulty of meter control program, the difficulty of modify parameter, limited storage of temperature curve. It adopts a temperature control software, the temperature curve can be set intuitively. And a large number of temperature curves can be stored. Analysis and statistics function, printing function.

Real time testing with temperature curve

Test the temperature curve of soldering at every time. During the process of welding, the actual temperature can be displayed at the same time. It is convenient to adjust and control the lead-free curve. Especially control the heat preservation zone and the melting zone.

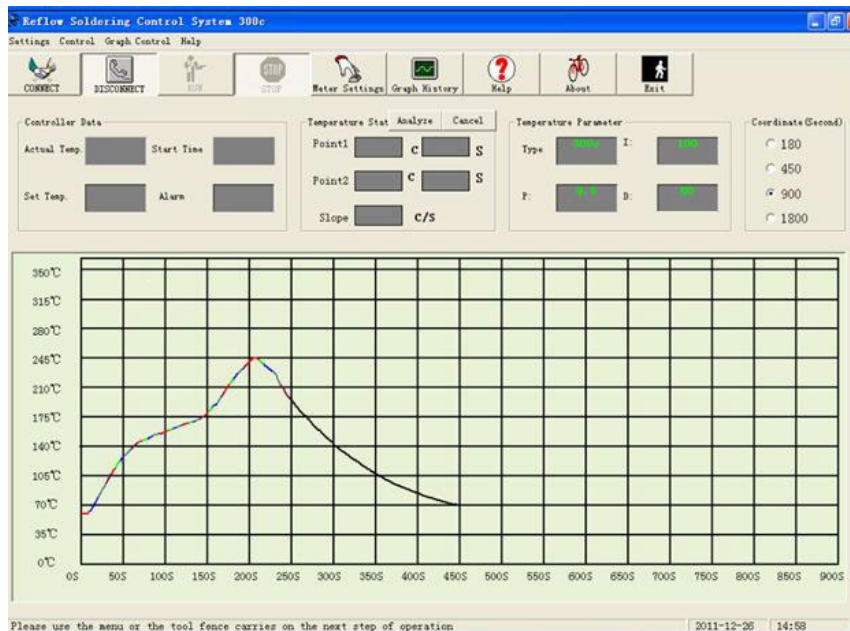


▲ Viewable operation

The real time display of temperature and the real time observation of the welding process. It is the best choice for science research and teaching.

T200C+ technology parameters

1. With all advantage of T200C
2. With better airproof function, the temperature is more uniformity.
3. With emitting smoke function.
4. With purifying and filtering exhaust gas function.
5. With single channel temperature measurement (multi channels is optical), T200C+ has been the first-class reflow oven.



Temperature control segment	40 segment. The segment can be set in computer according to the actual requirement.
Temperature-zone numbers	Single-zone and multi-segment
Temperature control system	PC control system, SSR non-contact output
Temperature accuracy	±2°C
Warm-up time	3 min
Temperature range	Room-temperature -360 °C
Heating supply	Infrared ray + Hot air convection
Effective working table area	360mm x 230mm (less than A4)
Welding time	3min±1min
Temperature curve	It can be set , adjusted and tested according to the actual requirement.
Cooling system	Transverse flow equal cooling
Rated voltage	AC single-phase, 220V;50Hz
Rated power	3.8KW
Mean power	1.6kw
Weight	39kg
Dimension	Length*width*height 700*460*310mm