

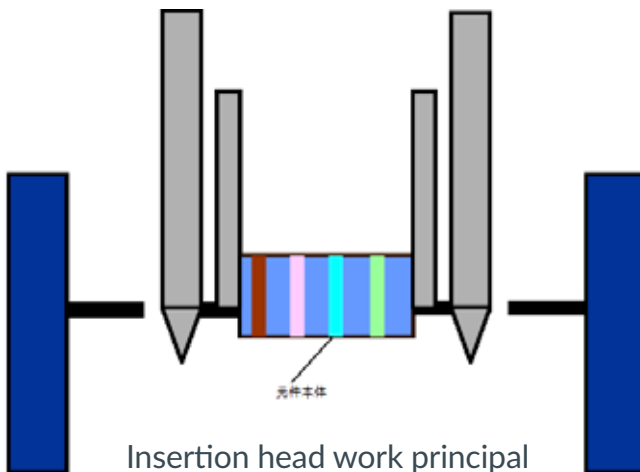
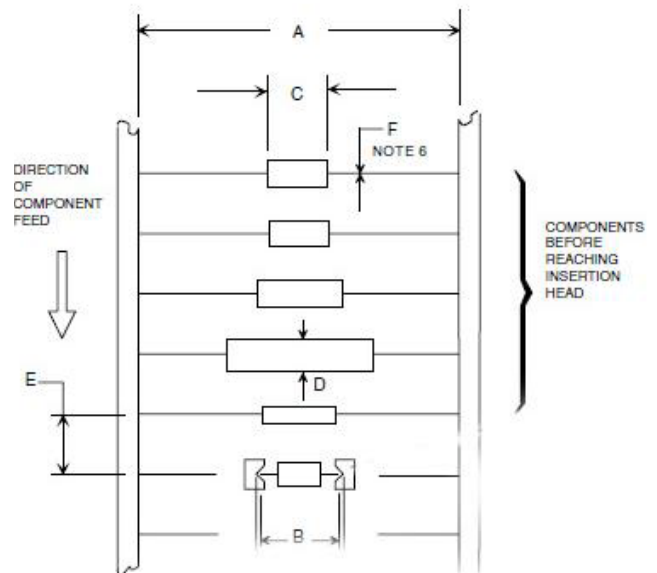


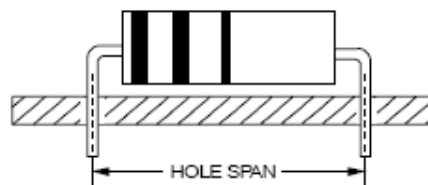
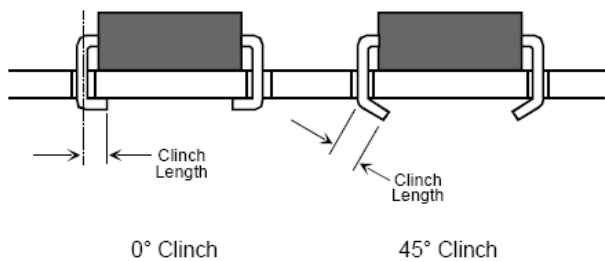
## ICT-Z4020 AXIAL INSERTION MACHINE

This ICT-Z4020 is a high-speed Automatic dual in-line package (DIP) THT Axial Component Insertion Machine that will help you to Improved production efficiency and operability.

- Expandable from 20 stations.
- Low-maintenance feeder technology.
- Dual part detection – two parts in the same chain slot.
- Insertion Directions: 0°, 90°, 180°, 270°, 360°.
- Jumper Wire Feeder Support.

Neighbor components parallel distance  
 $E(\text{pitch})=5.0\text{mm}$   
 Tape width: 52mm  
 Max Component Body Length:  $C=16\text{mm}$ ,  
 Resistor: 1/8W-2W  
 Axial Lead Component Kind: Diode, Resistor,  
 Capacitor, etc.  
 Max body diameter  $D=5.0\text{mm}$

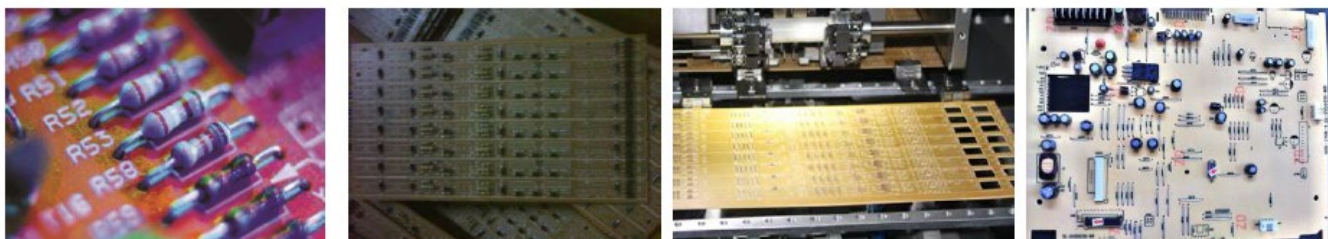




Hole Span: 5~20mm JW Span: 5~30mm Hole Diameter=Lead Diameter+0.48mm±0.08mm (0.019") (0.003")

Clinch lead angle is adjustable in a range (of 0°-45°). Clinch lead length is adjustable from 1.2mm to 2.2mm and is measured from the center of the insertion hole to the end of the lead.

## Application



## Specification

Model	I.C.T-Z4020
Theoretical Speed	24000CPH
Feeder Position	20 STD (30, 40, 50, 100 Option)
Plug-in Angle	4 Direction 0°, 90°, 180°, 270°, 360°
Lead Spacing	5-20mm
Component Height	0.5-0.7mm
PCB Size	50*50-350*300mm(Option: 400*300mm)
Cutting Lead Length	1.2-2.2mm
Cutting Lead Angle	10°~45° Internal Bending
Air Pressure	0.6 Mpa
Power Supply	AC220V, Single Phase, 50/60HZ, 1.5Kw
Dimension	L1900*W1500*H1700mm
Weight	Approx 1200kg

\*I.C.T keeps working on quality and performance, specifications and appearance may be updated without particular notice.