

DWS-200 DESKTOP WAVE SOLDERING MACHINE

Suitable for Small Quantity Production
Economy Desktop Wave Soldering Machine



- Chain conveyor system for soldering with pallet
- The maximum width of PCB: 200mm
- Dimension: 1300 (L) * 580 (W) * 730 (H)

Description:

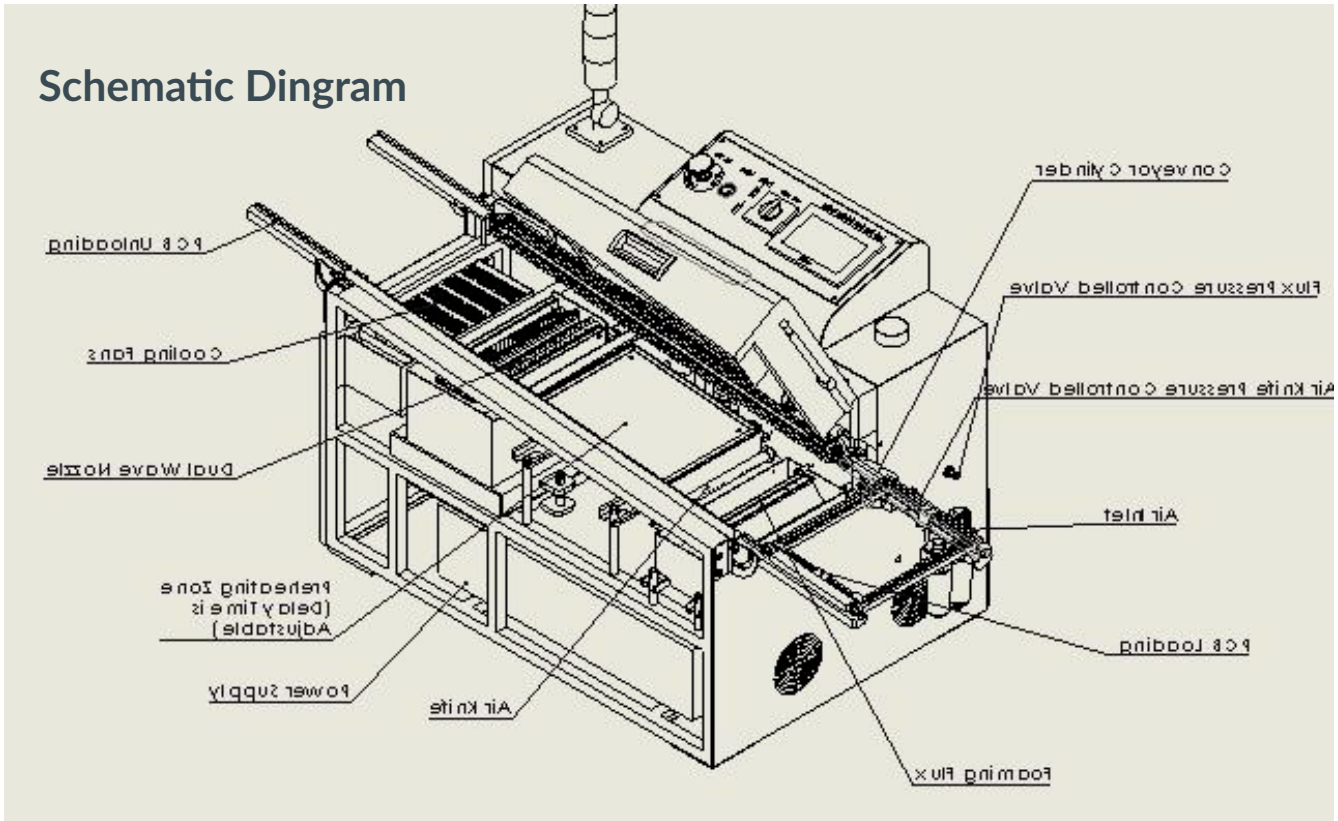
DWS-200 is a desktop compact wave soldering machine with CE certification.

- Chain conveyor system for soldering with pallet
- Foam spray system
- Infrared panel for preheating
- Stainless steel dual wave nozzles
- Stainless steel solder pot with 50kg capacity only
- Titanium dual wave nozzles & solder pot (Option)
- PLC and touch screen controlling system
- Foam spray system
- A single bottom preheating zone with IR panel
- Stainless steel dual wave nozzles & solder pot

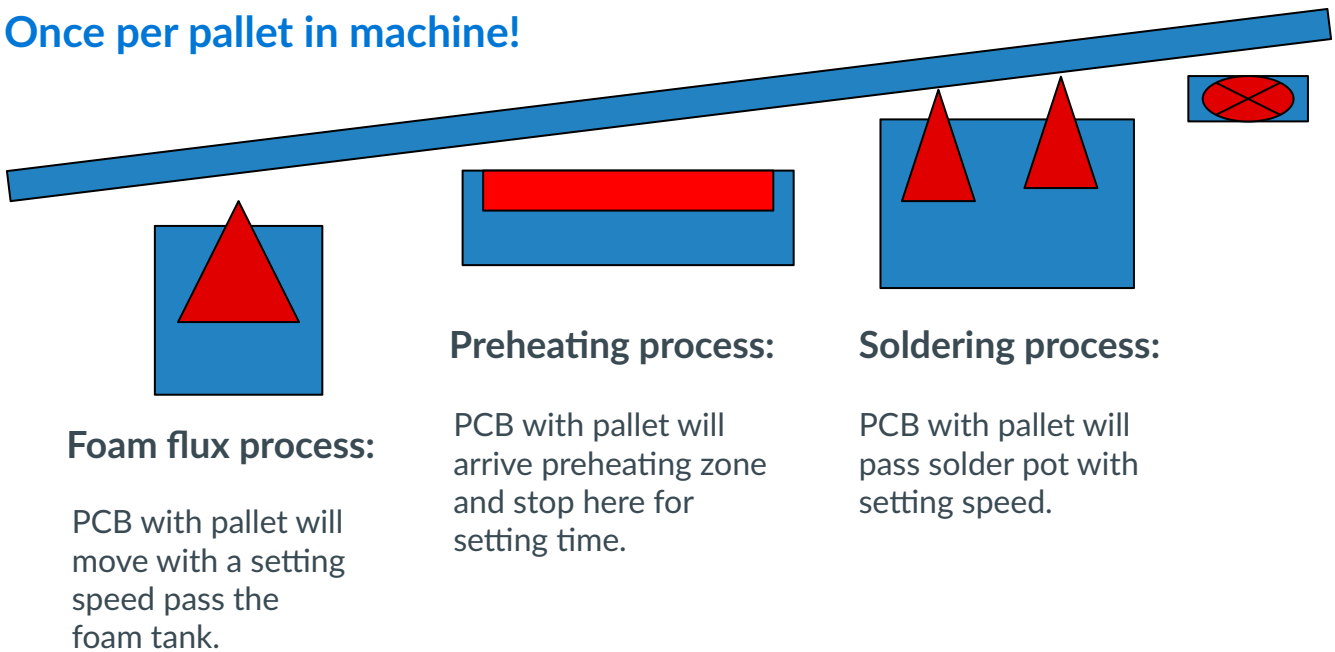
Features of DWS-200 Desktop Wave Soldering Machine :

- PLC and touch screen system makes the operation much easier . Can setting/saving/modify temperature , speed, preheating time etc on the screen.
- Foam fluxing. It is composed of foamed pipe, compressed air control valve and flux tank. Easy & robust.
- Preheating zone equipped with infrared heating panel and PID controlled heating system.
- Preheating temperature and pallet stop time above preheating zone can be set.
- Included dual wave nozzles, both wave heights are all controlled by stepper motor. Operator can change the height directly by the touchscreen.
- The standard configuration of solder pot and wave nozzles is stainless steel
- Upgrade to titanium solder pot and wave nozzles (Options).
- AUTO ON/OFF
- Chain transport system, PCB is carrying by pallet.
- Fans cooling system

Schematic Diagram



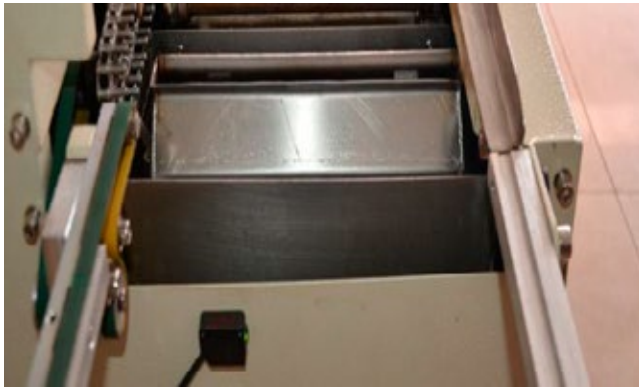
Once per pallet in machine!



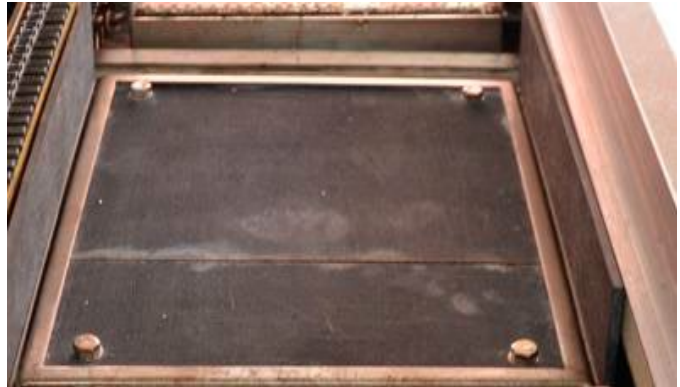
Specifications:

MODEL	DWS-200
PCB width	50-200MM
Soldering mode	Pallet (PCB size 50*50-200*200MM)
Solder volume	50kg
Dimension	1300 (L) *580 (W) *730 (H)
Net weight	90kg
Operation mode	Touch screen+ PLC
Transport speed	0.3M-0.9M/min
Flux tank capacity	2L
PCB transfer direction	From left to right
Spraying mode	Foam type
Preheating zone	One separately bottom preheating zone
Preheating power	1.8 KW / part
Preheating temperature	Room temperature~260°C
Solder pot materials	Stainless(Standard), upgrade to titanium (Options)
Solder pot heater	Heating tube
Heater power	1.2KW*2PCS
Solder pot temperature	Room temperature~320°C
Wave quantity	Dual wave
Max. wave height	8mm
Top Clearance	40mm
Solder pot heating-up time	80 mins
Solder pot lift	Manually
Solder pot in and out	Manually
Total power	4.5KW
Air supply	3-5BAR
Power supply	Single phase 220V 50HZ

DWS-200 Desktop Wave Soldering Machine:



Using belt transportation. The bottom inductor counts and inducting spraying and waving changing.



Using infrared heating plate for preheating, makes heating more evenly. Temperature: room temperature ~ 260°C (adjustable)



Form spraying system. It consists of foamed tube and compressed air and saved flux.



One bottom preheating zone. The heater could be taken out for easy maintenance.



The solder pot is made by stainless steel. The wave nozzle is easy to take down and it saves much time for the cleaning. Upgrade to titanium is an option.



The cooling system in the exit consists of two computer fans.



DWS-200 could set delay time as you like to ensure the best welding effect.



Add a air knife behind the foaming box to make the spraying more evenly.



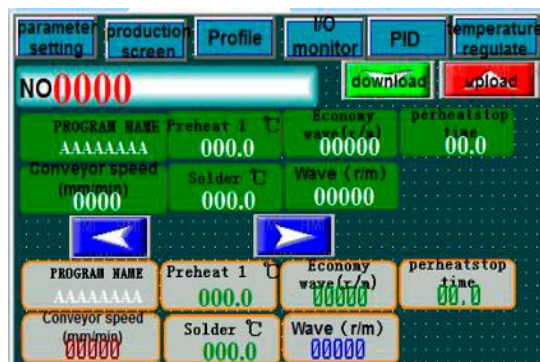
All the electrical components and PLC, connector, solid-state relay, disconnecter, stepper motor have CE certification.



Touch screen and PLC controlling system



User friendly interface is easy to operate. The temperature could setting/saving/modify/preheating delaytime on the screen directly.



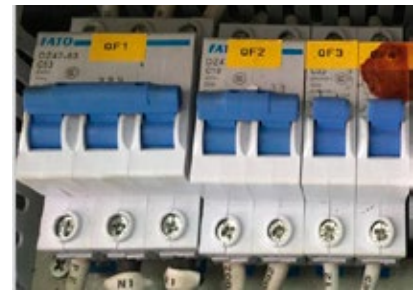
PLC and touch screen controlling system realizes that easy to modify temperature.



Carlogavazz solid-state relay



Stepper motor



Disconnecter



Schneider contactor



PLC

DWS-200 Desktop Wave Soldering Machine including:

- Foamed pipe and PLC controller spraying system
- One sparately bottom preheating zone
- One sparately bottom cooling zone
- Stainless solder pot and dual wave nozzles
- Single rail chain transportation system
- Touch screen panel
- Dimensions: 1300 (L) * 580 (W) * 730 (H)
- Weight: 90KG

Free acessories as follows:

ITEM NAME	DESCRIPTION	QUANTITY	UNIT
Preheater	1.8KW 220V	1	pcs
Preheater Sensor	3M	1	pcs
Heater plate	1.2KW	1	pcs
Thermocouple	100MM	1	pcs
Conveyor chain clip	35B	1	pcs
SSR	SSR-KD-40-L	1	pcs
Coolingfan	4 " 220VAC	1	pcs

ITEM NAME	DESCRIPTION	QUANTITY	UNIT
Hex spanner		1	pcs
Open spanner		1	pcs
Slotted screw driver		1	set
Crosss crew driver		1	set
Key of door	705	2	pcs
Tool box		1	pcs
Resistor	20D471k	2	pcs
PLC communication cable		1	pcs
Touch screen communication cable		2	pcs
Screw	M5*6	1	pcs
Screw	M6*6	1	pcs
Screw	M5*12	10	pcs
Screw	M5*12	10	pcs
Screw	M6*15	10	pcs
Screw	M6*25	10	pcs
Screw	M8*25	10	pcs

Package & shipping:

